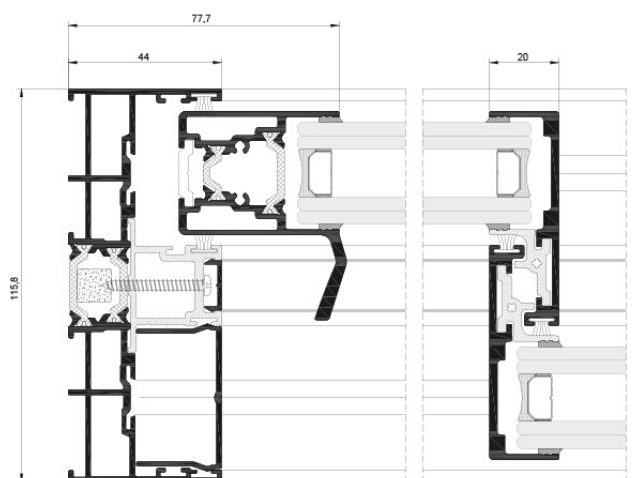


MINIMAL COR VISION SLIDING SYSTEM



ENERGY EFFICIENCY

Thermal Transmission Coefficient

U_w from 1.3 (W/m^2K)

Please consult typology, dimensions and glazing.

ACOUSTIC INSULATION

Maximum glazing: 30 mm

Maximum acoustic insulation: $R_w = 41$ dB

CATEGORIES ACHIEVED AT TEST CENTRE

Protection against atmospheric agents

Air permeability (UNE-EN 12207:2000): Class 4

Water tightness (UNE-EN 12208:2000): Class 7A

Wind resistance (UNE-EN 12210:2000): Class C5

Reference test 1.23 x 1.55 m 1 Sash + 1 fixed

MINIMAL COR VISION SLIDING SYSTEM

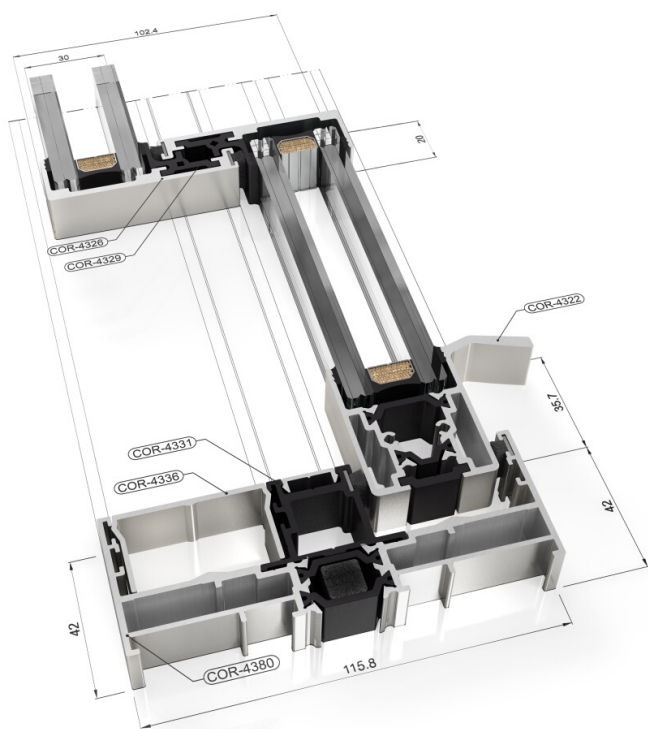
SECTIONS	Frame 116 mm Triple rail 182 mm Sash 37 mm
PROFILE THICKNESS	Door 1.7 mm
MAXIMUM DIMENSIONS	Width (L) = 2,500 mm Height (H) = 3,000 mm
MAXIMUM WEIGHT/SASH	320 Kg

Please consult regarding maximum weight and dimensions according to types

DRAINAGE	Optionally drainage system and drainage grid made of stainless steel
----------	--

EXTRUSION ALLOY	6063 T-5
POLYAMIDE STRIP LENGTH	Polyamide 6.6 reinforced with 25% fiberglass: from 16 to 24 mm
OPENING POSSIBILITIES	Sliding 2, 3, 4 and 6 sashes. Optionally monorail and triple rail (1 sash + 1 fixed) (2 sashes + 1 fixed) Optionally corner sash at 90° without mullions. Galadage 1 and 2 sashes

FINISHES	Colour powder coating (RAL, mottled, rough...) According to Qualicoat >60 microns Wood effect powder coating According to Qualideco standard Anodized According to Ewva Euras Standard Class 15 Optionally Class 20 and 25 Optionally bicoloured
----------	---



920095, Șos. Călărași, km 93
Mun. Slobozia, Jud. Ialomița
România | Hamilton Business
Center, corp 5

QUALITY DRIVEN