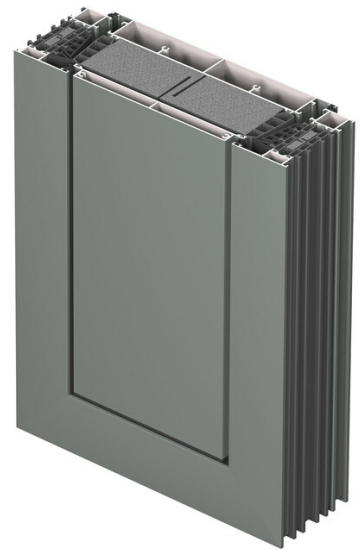


PASIV HOUSE MASTERLINE 10

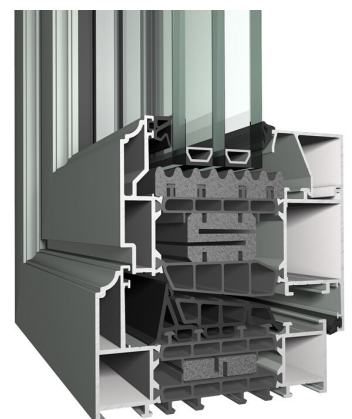


The product offering of MasterLine 10 windows is truly unique in its applicability: inward opening windows, a full range of transoms and frames, connection profiles with Sliding and Curtain Wall system, but also the design freedom that is offered with the Renaissance and Deco profile range. The windows offer a Passive House certificate! All these features make MasterLine 10 the perfect solution for domestic as well as public projects.

DIFFERENT DESIGN VARIANTS AVAILABLE

MasterLine 10 offers unlimited design freedom combined with ultimate comfort and optimal insulation performance.

MasterLine 10 windows are designed for the building trends of today and tomorrow: low energy building, maximum daylight access, superb performance and safe homes (burglar resistance class 3).



TECHNICAL CHARACTERISTICS

		FUNCTIONAL	RENAISSANCE	DECO
Min. visible width inward opening window	Frame	60 mm		
	Vent	37 mm		
Min. visible width inward opening window-door	Frame	60 mm		
	Vent	67 mm		
Min. visible width T-profile		87 mm		
Overall system depth window	Frame	97 mm	107 mm	107 mm
	Vent	107 mm		
Rebate height		27 mm		
Glass thickness	Frame	up to 88 mm		
	Vent	up to 88 mm	up to 78 mm	up to 78 mm
Glazing method		60 mm glass fibre reinforced noryl strips		

PERFORMANCES

ENERGY											
Thermal insulation (1) EN ISO 10077-2	Uf-value down to 0.78 W/m ² K depending on the frame/vent combination and the glass thickness.										
COMFORT											
Acoustic performance (2) EN ISO 140-3; EN ISO 717-1	Rw (C; Ctr) = 46 (-1; -4) dB / 50 (-1;-2) dB, depending on glazing type										
Air tightness, max. test pressure (3) EN 1026; EN 12207	1 (150 Pa)		2 (300 Pa)		3 (600 Pa)		4 (600 Pa)				
Water tightness (4) EN 1027; EN 12208	1A (0 Pa)	2A (50 Pa)	3A (100 Pa)	4A (150 Pa)	5A (200 Pa)	6A (250 Pa)	7A (300 Pa)	8A (450 Pa)	9A (600 Pa)	E900 (900 Pa)	
Wind load resistance, max. test pressure (5) EN 12211; EN 12210	1 (400 Pa)		2 (800 Pa)		3 (1200 Pa)		4 (1600 Pa)		5 (2000 Pa) Exxx (>2000 Pa)		
Wind load resistance to frame deflection (5) EN 12211; EN 12210	A (≤ 1/150)			B (≤ 1/200)			C (≤ 1/300)				
SAFETY											
Burglar resistance (6) EN 1627-1630	RC 1			RC 2				RC 3			

This table shows possible classes and values of performances. The values indicated in green are the ones relevant to this system.

(1) The Uf-value measures the heat flow. The lower the Uf-value, the better the thermal insulation of the frame.

(2) The sound reduction index (Rw) measures the capacity of the sound reduction performance of the frame.

(3) The air tightness test measures the volume of air that would pass through a closed window at a certain air pressure.

(4) The water tightness testing involves applying a uniform water spray at increasing air pressure until water penetrates the window.

(5) The wind load resistance is a measure of the profile's structural strength and is tested by applying increasing levels of air pressure to simulate the wind force.

There are up to five levels of wind resistance (1 to 5) and three deflection classes (A,B,C). The higher the number, the better the performance.

(6) The burglar resistance is tested by statistical and dynamic loads, as well as by simulated attempts to break in using specified tools.



920095, Șos. Călărași, km 93
Mun. Slobozia, Jud. Ialomița
România | Hamilton Business
Center, corp 5

QUALITY DRIVEN