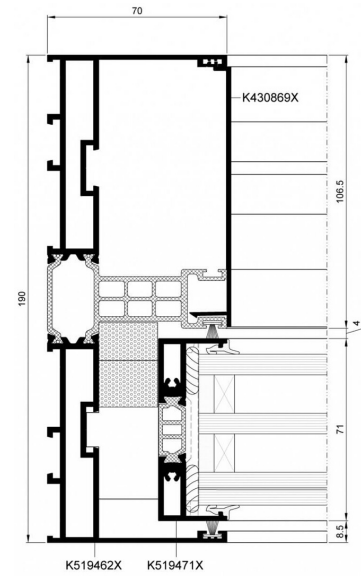
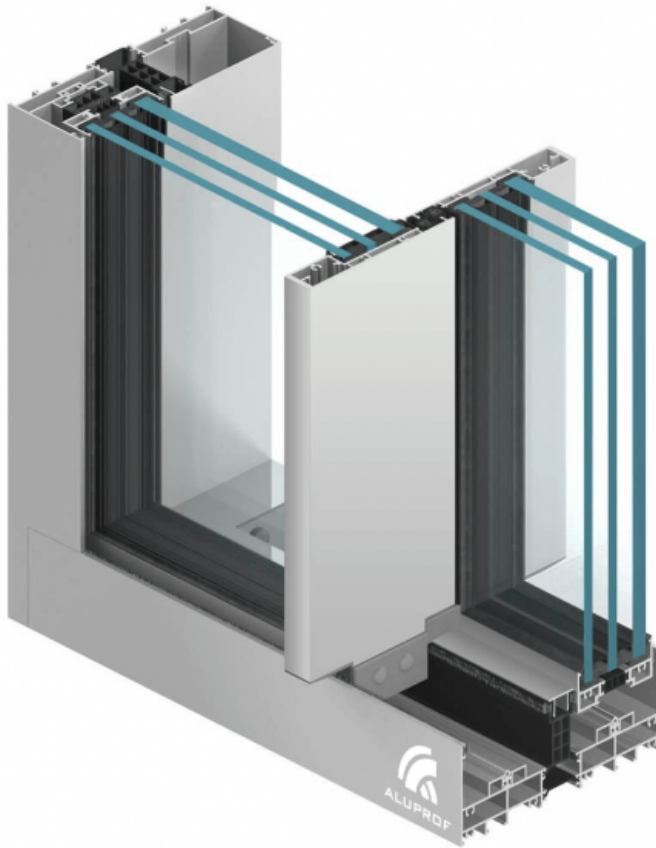


MINIMAL MB SKYLINE

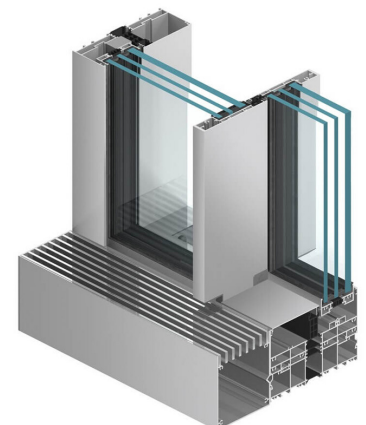


The MB-SKYLINE sliding door system with invisible frame uses narrow profiles. This gives the construction a modern and minimalist look. Constructions fabricated with MB-SKYLINE have a one-of-a-kind design and raise the profile of any project.

SLIDING DOOR SYSTEM WITH INVISIBLE FRAME

They provide a comfortable, threshold-free connection of indoor and outdoor living spaces making natural environment part of users' daily experience. While the doors can be very large, their slim construction gives the impression of lightness and delicacy.

The product is uniformly glazed, has slim modulations and perfectly fits into high-end construction market.



FEATURES AND BENEFITS

- 71 mm (door leaf) and 190 mm-deep profiles (2-slide frame)
- modern design and high aesthetics: the frame is concealed in the wall, in the floor and in the ceiling, the frame profile is fully aligned at the sides, the visible connection width of door leaves is 25 mm.
- door leaves up to 750 kg and up to 4 m high
- 3-chambered, thermally-insulated profiles
- 52 to 60 mm-thick triple glazing units
- door opens manually or automatically
- drives and control units are concealed in frame profiles
- can use an automatic unit mounted on the outside of the construction

PERFORMANCE	MB SKYLINE
Air Permeability	class 3, EN 12207
Watertightness	up to class 9A (600Pa), EN 12208
Wind load resistance	up to class C5 (2000Pa), EN 12210
Thermal insulation	Uw from 0.85 W/(m ² K)*

* - for door leaf: 2.07 x 3.44 m, infilled with triple glazing units Ug 0.5 W/(m²K) and warm spacer



920095, Șos. Călărași, km 93
Mun. Slobozia, Jud. Ialomița
România | Hamilton Business
Center, corp 5

QUALITY DRIVEN